


# PRODUCT SHEET

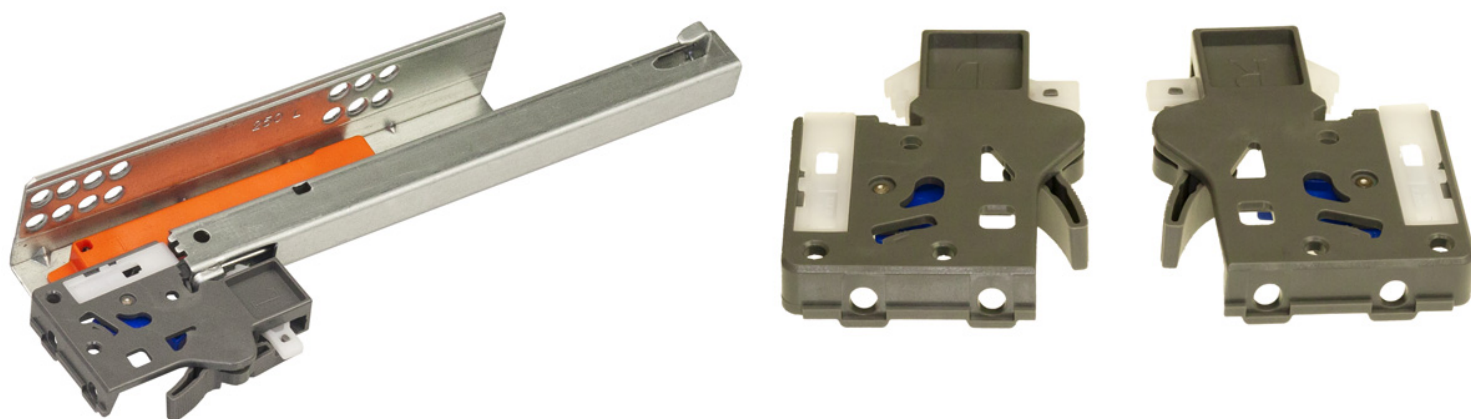
## Description:

Invisible Semi Extension PTO, 400mm, Pre-Zinc, W/Quick Release Handles, Max Drawer Width:500mm, Load Capacity:25Kg

## Item number:

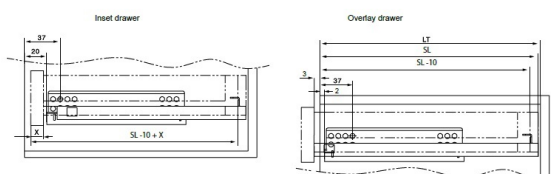
16.13.428-0

| Units | Box | Carton | HS Code    | Barcode  |
|-------|-----|--------|------------|--|
| Pair  | 1   | 10     | 8302420090 |  |
|       |     |        |            | 5704866064385  |

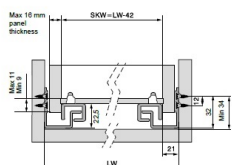


### Installation dimensions

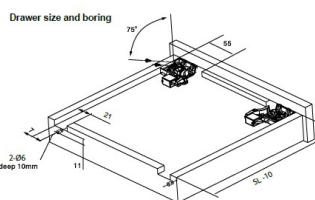
SL= Slide length LT= Internal cabinet depth Inset drawer LT min=SL+21 Overlay drawer LT min=SL+3



| Slide length | 250 mm    | 300 mm    | 350 mm    | 400 mm    | 450 mm    | 500 mm    | 550 mm    |
|--------------|-----------|-----------|-----------|-----------|-----------|-----------|-----------|
| Item No.     | 16.13.425 | 16.13.426 | 16.13.427 | 16.13.428 | 16.13.429 | 16.13.430 | 16.13.431 |

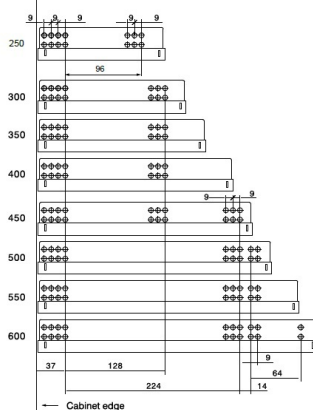


### Drawer size and boring

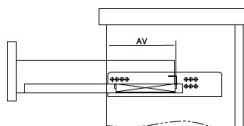


| SL (mm) | 250  | 300  | 350  | 400   | 450   | 500   | 550   | 600   |
|---------|------|------|------|-------|-------|-------|-------|-------|
| AV (mm) | 98,5 | 98,5 | 98,5 | 118,5 | 118,5 | 118,5 | 138,5 | 138,5 |

### Hole pattern



### Extension loss



## SISO A/S

Mileparken 11  
DK-2740 Skovlunde  
Denmark  
VAT: DK 24786013

Phone +45 45 830 900

www.siso.dk  
siso@siso.dk

Danske Bank  
Nytrov Branch  
Copenhagen  
SWIFT: DABADKKK

Account no.  
4180 3112 112936  
IBAN Account  
DK7230003112112936